

AYO Series

Lower Current
Three Phase
RFI Filters



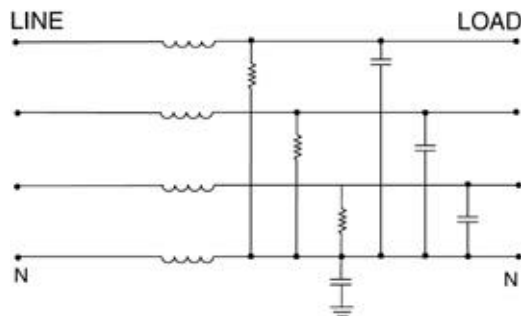
UL Recognized
CSA Certified
VDE Approved

AYO Series

The AYO series filters are designed for 3-phase, four wire, WYE applications providing filtering in each of the three lines plus neutral.

These lower current RFI filters provide filtering to industrial 3-phase applications.

Electrical Schematic



Specifications

Maximum leakage current, each

line-to-ground	3, 6, 10A	20A
@ 120 VAC 60 Hz:	2.0 mA	3.5mA
@ 250 VAC 50 Hz:	3.0 mA	5.5mA

Hipot rating (one minute):

line-to-ground	1500 VAC
line-to-line	1450 VDC

Operating frequency:

50/60 Hz

Rated voltage:

phase-to-phase	440 VAC
phase-to-neutral/ground	250 VAC

Rated current:

	@120 VAC	@250 VAC
3AYO1	3A	3A
6AYO1	6A	6A
10AYO1	10A	10A
20AYO1	20A	20A

Minimum insertion loss in dB:

Line-to-ground in 50 ohm circuit

Current Rating per phase	Frequency-MHz					
	.15	.5	1	5	10	30
3	12	23	29	33	38	35
6	7	23	30	40	50	30
10	-	-	5	16	28	15
20	-	7	11	32	23	12

Line-to-line in 50 ohm circuit

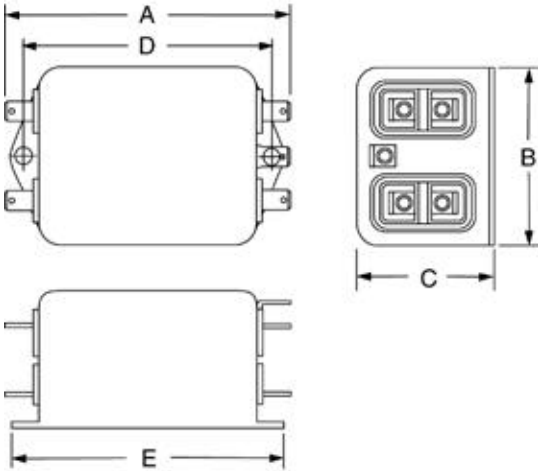
Current Rating per phase	Frequency-MHz					
	.15	.5	1	4	10	30
3	-	12	20	50	35	30
6	10	18	24	31	28	28
10	10	18	24	42	28	22
20	10	18	24	42	38	23

Series AYO

Case Style

Metric shown in italics.

AYO



Typical dimensions

Terminals: $\frac{.250}{6.35}$ (9) Holes: $\frac{.07}{1.8}$ Dia.(8) Slot: $\frac{.07 \times .16}{1.8 \times 4.1}$

Mounting holes: $\frac{.188}{4.78}$ Dia.(2)

Case Dimensions

Metric shown in italics.

Part No.	A (max)	B (max)	C (max)	D $\pm .015$ $\pm .38$	E (max)
AYO	$\frac{3.37}{85.6}$	$\frac{2.07}{52.5}$	$\frac{1.53}{38.7}$	$\frac{2.938}{74.63}$	$\frac{3.35}{85.1}$

Pricing

Consult your local Corcom sales representative for pricing.

Part No.

3AY01
6AY01
10AY01
20AY01